

How to Implement Multi-Screen Support for Touch Menus



With *FrontFace*, you can easily create interactive touchscreen menus. This usually requires a system with a single interactive touch screen. Users can navigate a menu and display content, such as images, videos, PDFs, or web pages, on the same screen. Sometimes, however, it is desired to display this content on a separate screen or projector. A typical use case would be a presentation by one person to a larger audience. In this case, the touchscreen is used for control while the content intended for the audience is displayed on a separate, large, non-interactive screen or projector.

This scenario can be implemented with *FrontFace* and the *Remote Control Plugin*. This tutorial explains how to do so step by step. To better understand the process, it is helpful to have basic knowledge of *FrontFace*, particularly Touch Menus. You should also have already set up a player PC with two screens, one of which is a touchscreen.

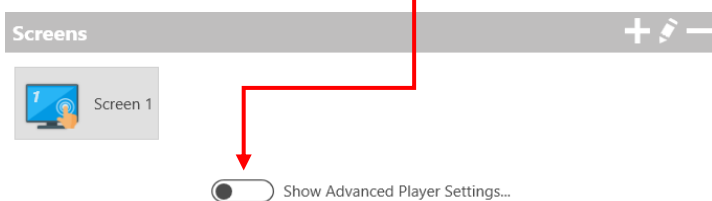
1 Downloading the Remote Control Plugin

FrontFace can easily be extended by plugins to add additional functionality. The **Remote Control** Plugin, which is required for the multi-screen support, is such an extension.

Please download the Service Plugin "**Remote Control**" (`RemoteControl12.ffapx`) from the *FrontFace* Website: <https://www.mirabyte.com/en/frontface/download.html#plugins>

2 Installation of the Remote Control Plugin

Go to the "Players" section of the *FrontFace Assistant* and activate the option "Show Advanced Player Settings...":

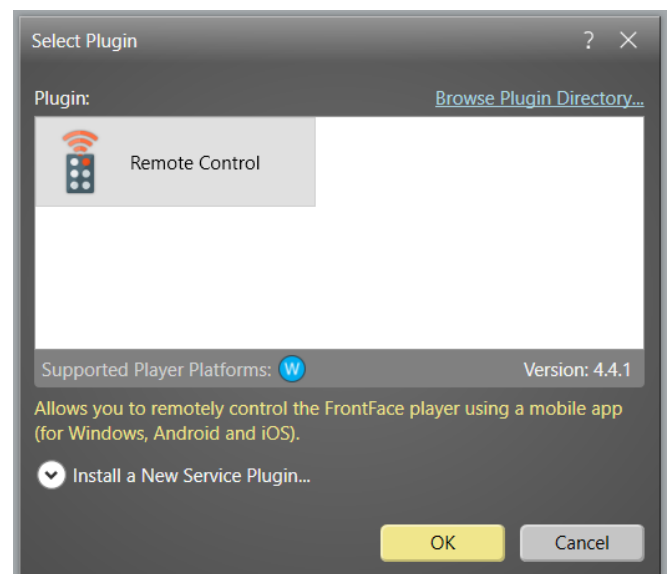


Next, please add a "Service Plugin" by clicking on the "+" button in the "Services" section:



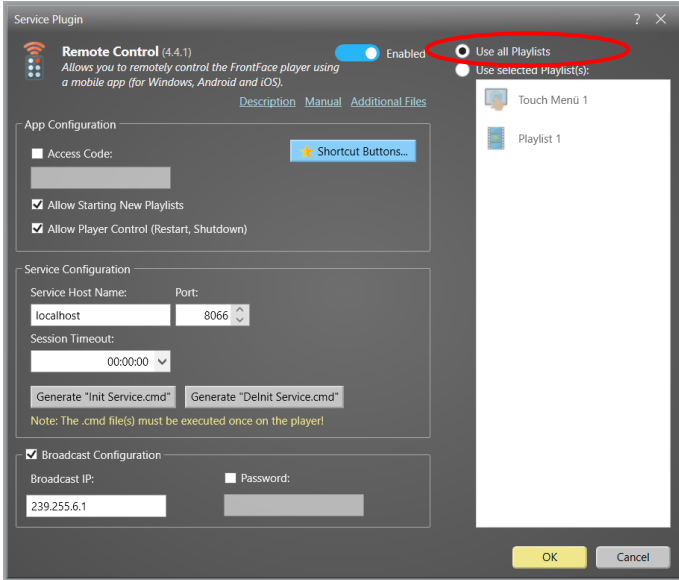
The dialog shows a list of all currently installed service plugins, which is initially empty.

Click on "Install a New Service Plugin" and select the file `RemoteControl12.ffapx`, which you have already downloaded in [Step 1](#). After the plugin has been installed, it will appear in the list of available service plugins:



Select the "Remote Control" Plugin and confirm with "OK".

In the settings dialog of the plugin select "Use all Playlists":



First, the setup file for the player PC must be generated so that the Remote Control Service is available later.

To do that, click on the "Generate Init Service.cmd" button and then enter the name of the local Windows user account (on the player PC).

Then save the generated **FrontFace RCS Init.cmd** file, e.g., on a USB stick, so that you can later run it on the player PC (with admin privileges).

If you also want to test the functionality in the player preview on your workstation PC, create an additional batch file with your local Windows user account and run it on your workstation PC, also with admin privileges.

3 Creating the Screens

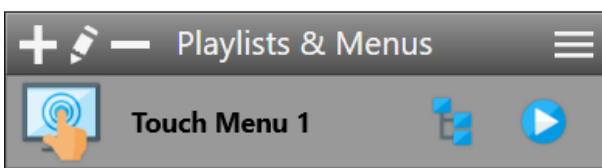
Next, create the screens in your project. Please go to "Players > Screens" and click "+" to add the screens. The first screen is typically the interactive touchscreen that will later be used for control. The content is then displayed on the 2nd screen.

4 Creating the Navigation Structure

Head to "Contents" section and add a Touch Menu. Create your Touch Menu with buttons and sub-buttons, but do not add any pages or content at this point.

IMPORTANT: Only create a navigation structure, without any content for the moment!

Then quit the editing mode of the Touch Menu and return to the "Playlists & Menus" list:



5 Creating Content Playlists

To display the content on a separate screen, the content is not added to the touch menu itself, but as separate playlists.

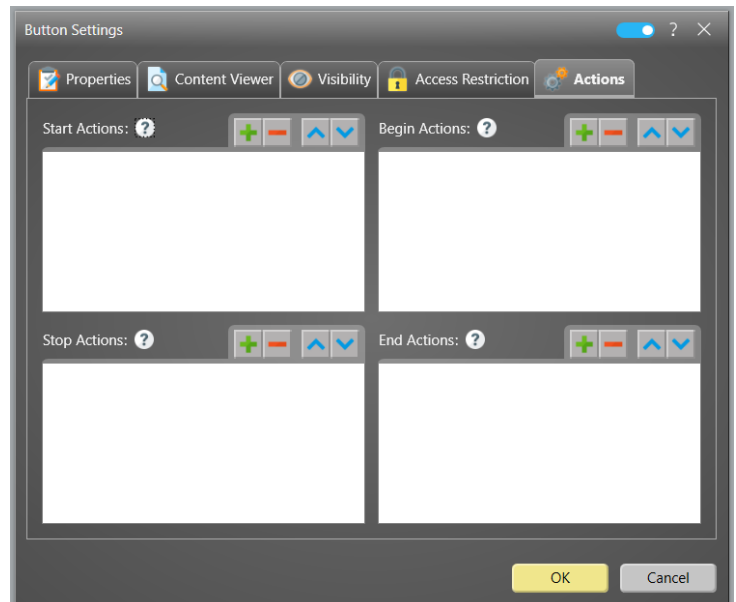
For each content that you wish to display when a menu button is clicked, you need create a corresponding playlist. Name the playlists in a meaningful way so that you can recognize the corresponding content, which will make it easier for you to assign later.

Additionally, create a playlist to be displayed on the 2nd screen when no content is supposed to be shown (default playlist). If you want the screen to remain black in this case, simply create an empty playlist.

If you would like to preview your playlist or a page (i.e., see the content as it will appear later on the player), just click the preview button of the playlist or page:

6 Linking Navigation and Content

Head back to the Touch Menu and open each button's settings dialog. Activate the "Expert Mode" and select the "Actions" tab.



In "Start Actions" click the "+" button and select "Remote Control Command" and click "OK". For "Command to Execute" please select "Start Playlist".

Then, for "Playlist" select your previously created playlist from the list and enter the screen number of the 2nd screen.

Repeat these steps with all buttons and assign the launch of the respective playlist as the "Remote Control Command" for each.

7 Definition of a Default Timer

To ensure that your Touch Menu is displayed permanently, switch to "Scheduling" and assign the Touch Menu to the interactive screen and the default playlist to the other screen which serves as content viewer (screen 2).

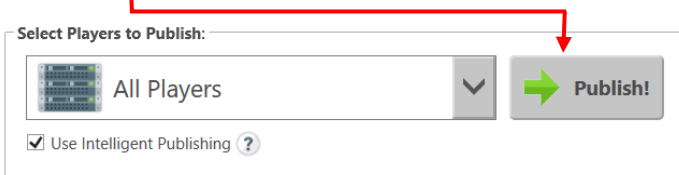
8 FrontFace Assistant Preview

If you want to test the functionality in the *FrontFace Assistant*, you can use the "Player Preview". In the "Players" section of the *FrontFace Assistant*, you will find a preview button for each player in the list of players.

To do this, you must first run the batch file on your workstation PC (see [Step 2](#)).

9 Publishing the Content to the Player PC

Please go to the "Publish" section of the *FrontFace Assistant* and click on "Publish!" :



Now all the content, scheduling information and the **Remote Control** plugin itself will be transferred automatically to your player PC.

10 Finish Installation on the Player PC and Start the FrontFace Player App

Head over to your player PC and run the `FrontFace RCS Init.cmd` file that you previously saved on a USB stick with admin rights (!).

The last step is to start the *FrontFace Player App* from the Windows start menu. The player is now ready for use and your Touch Menu is displayed on your touch screen while your default playlist is displayed on the 2nd screen.

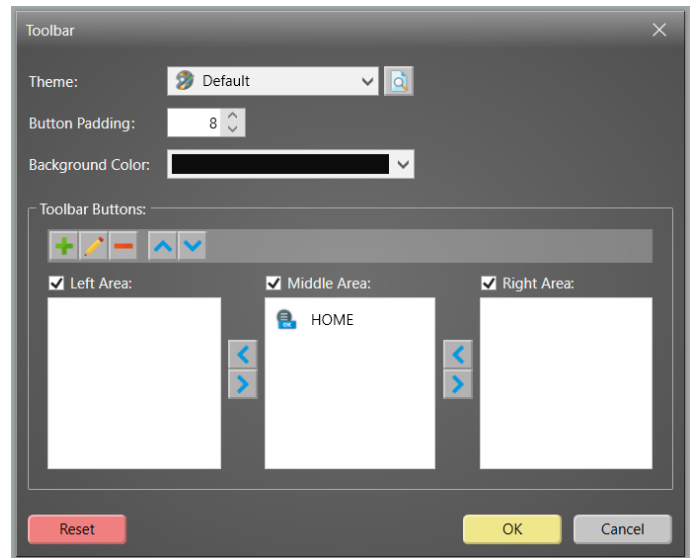
11 Close Content (Optional)

If the user clicks one of the buttons on the touch screen, the corresponding playlist is displayed on the 2nd screen. Clicking a different button will display the other playlist.

Multi-page playlists or paginated content is flipped automatically.

If you also want to give users the option to close the displayed content again, you can create an extra button in the toolbar:

Open the touch menu settings, go to "Menu Layout" and click on "Toolbar".



In the "Toolbar Buttons" section click the "+" button and select "Button". Add a caption, for example, "Close".

Go to "Action(s) to Execute" and click on "+". Then select "Remote Control Command" and click "OK".

Under "Command to Execute" click "Stop Playlist".

For more information about the basic operation and installation of *FrontFace* and the capabilities that this software provides, please refer to the *FrontFace* user manual and the video tutorials available online at <https://www.mirabyte.com/go/frontface/>.

If you have any technical questions about *FrontFace*, the featured *Remote Control Plugin* or this tutorial, please feel free to contact our support. Just visit our homepage to find out how to contact us: <http://www.mirabyte.com/en/support/> 