


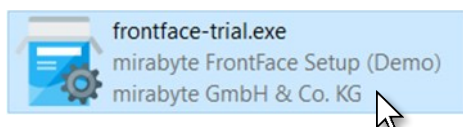
Learn How to Create a Protected Kiosk Browser Terminal with a Windows PC!



The "Kiosk Browser" function of the Digital Signage & Kiosk Software FrontFace allows you to display websites in a secure full-screen browser. This makes it easy to set up browsing stations, login or registration terminals quickly and securely – and without any programming knowledge. Finally, the free FrontFace Lockdown Tool helps to secure the PC for unattended operation.

1 Downloading and Installing *FrontFace*

First, please visit the *FrontFace* product website <https://www.mirabyte.com/en/frontface/> and click on the  button to download the trial version (or the full version if you have a license). After the download, run the installation package `frontface-trial.exe` on your workstation PC, and select the installation option "Full Installation (incl. FrontFace Assistant)."



2 Installation on the Kiosk PC

The *FrontFace* software consists of two components, the **FrontFace Assistant** for creating and configuring your projects and the **FrontFace Player App** for actually playing your content on the touch screen terminal. So far, you have only installed the *FrontFace Assistant* on your workstation PC.

The kiosk PC (e.g. an All-in-One-PC with touch screen or a tablet) is the system with which the actual users interact. It is called "Player PC." Please execute the installation package you just downloaded also on that PC. During the installation process, select the installation option "Install Player App only (for installation on a player PC)." During the installation process, a network share is created automatically (please write down the address!), which is used later to remotely update the player PC from your workstation PC using the *FrontFace Assistant*.

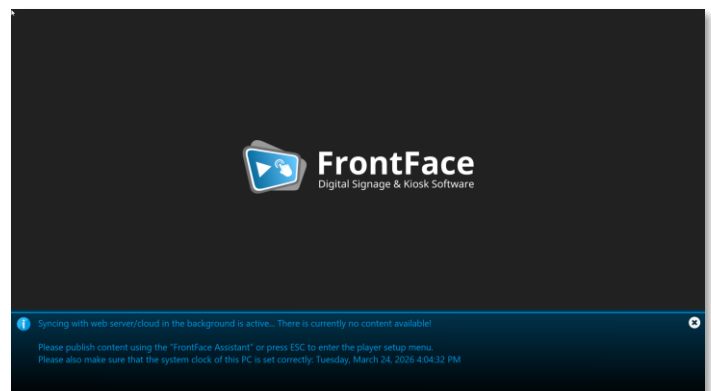
This, of course, requires that your workstation PC and the player PC are in the same local area network.

<https://www.mirabyte.com/>

There are also other installation types available, for example, installing everything on just one PC or publishing by cloud. However, in this tutorial, we want to limit ourselves to the most common installation type with two PCs. For more information, please see the *FrontFace* [user manual](#).

After having installed the *FrontFace Player App* on the player PC, you may also need to explicitly allow access to network shares in Windows system settings. How to do that is described in detail in our FAQ: <https://www.mirabyte.com/go/kb/68>

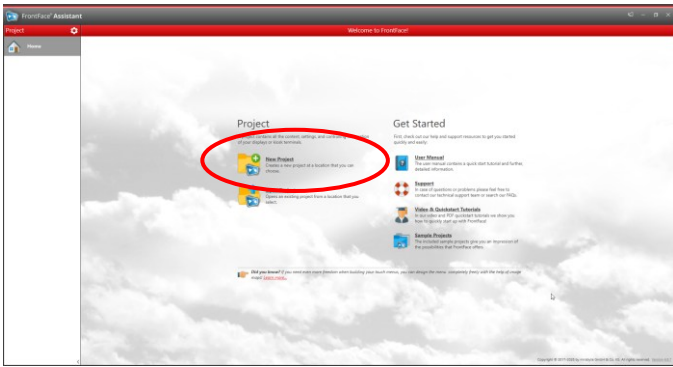
The last step is to launch the *FrontFace Player App* from the Windows start menu. After a few seconds, a message appears telling you that no content has been published yet. The player is now good to go:



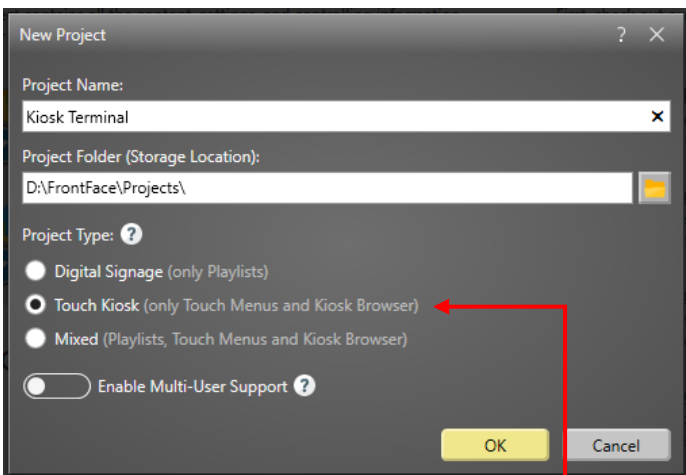
3 Creating a Project

Now head back to your workstation PC and open the *FrontFace Assistant* from the Windows start menu.

Click on "New Project" on the home page of the application:



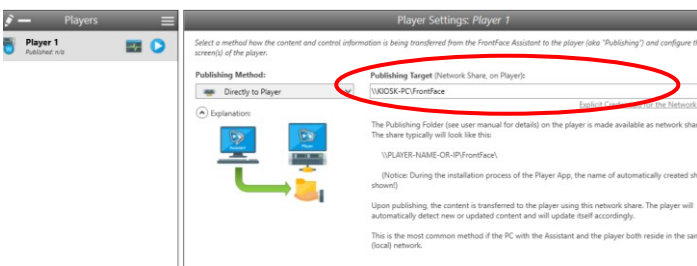
Enter a name for the project (e.g. "Kiosk Terminal") and then select a suitable location on your hard disk to store the project, such as "Documents."



Important: As Project type, please select "Touch Kiosk"

Once you have clicked OK and the project has been created, go to the "Players" section of the FrontFace Assistant and enter as "Publishing Target" the address of the network share of your player PC, which was been created during the installation in [step 2](#). This is usually:

\\PLAYER-NAME\FrontFace

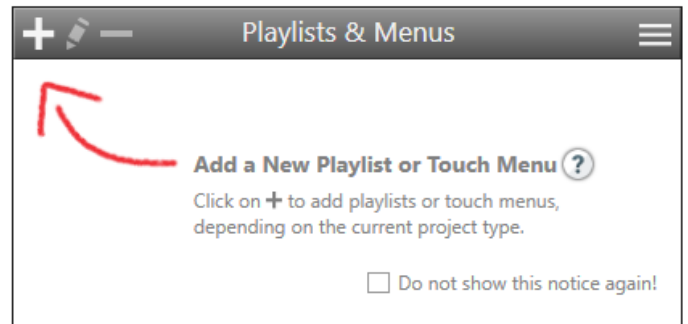


4 Creating a Kiosk Browser (User Interface)

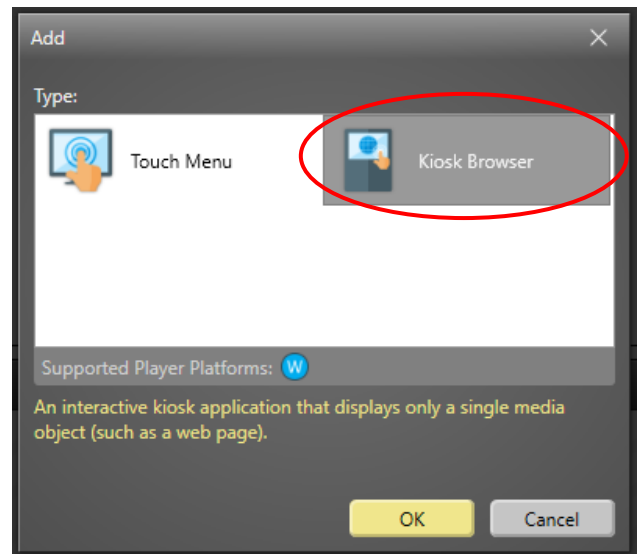
To allow the users to interact with the terminal and consume the content, you must first create a user interface which is referred to as "Kiosk Browser."

This interface then displays the content to the user. In most cases, this will be a web page, but other types of content are also possible (e.g. a video or a PDF document).

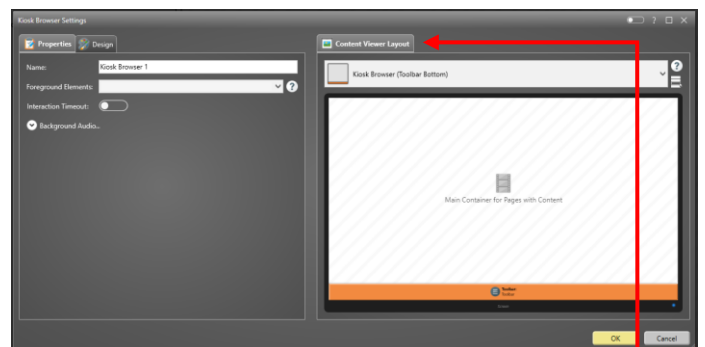
To do so, head over to the "Contents" menu and click "+" above the "Playlist & Menus" list:



In the dialogue box that appears, select "Kiosk Browser" and click OK:



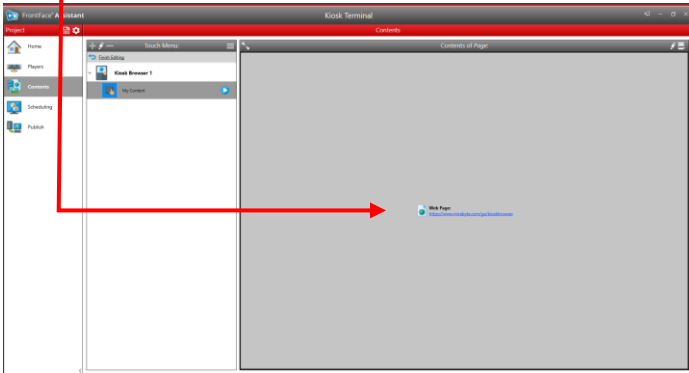
The settings dialogue of the Kiosk Browser appears. Here you can adjust various settings, such as a "Interaction Timeout," a timeout that triggers an automatic return to the start page if a user leaves the terminal without clicking "Home" button on leaving.



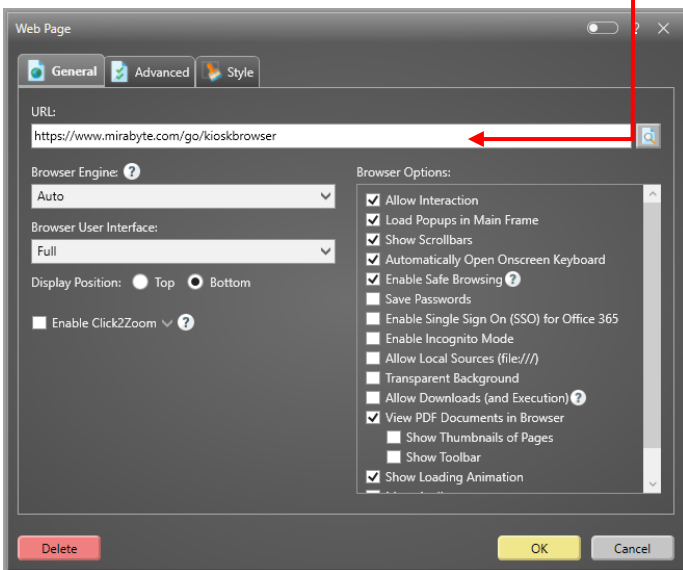
Furthermore, you can change the "Content Viewer Layout" and choose whether the toolbar should appear at the top or bottom of your screen. This optional toolbar provides functions such as "Forward" and "Back" (for multi-page content), "On-screen Keyboard" or "Home." In most cases, however, this does not need to be customized. Alternatively, the toolbar can be also hidden entirely if desired. In this case, select the "Kiosk Browser (Full Screen)" layout.

5 Select the Content (Website) to Display

After confirming with *OK*, please click on the large grey "Web Page" area :



Now enter the start URL for the web page you want to display :




You can also choose whether to display a full browser interface (including the address bar) or no browser interface at all. In the latter case, the web page will simply be displayed in full-screen mode. Further browser options include, for example, "Show Scrollbars" or "Automatically Open Onscreen Keyboard." A detailed overview of all options can be found in the [user manual](#).

If you wish to display a different media object instead of a web page (e.g. a video or a PDF document), click on "Delete", then on "+", and select the desired media object; otherwise, click on *OK*.

Hint: If you want to display more than one type of content, the "Kiosk Browser" function is not the best choice. Instead, use a "Touch Menu." You can find out exactly what this is and how to create a Touch Menu using *FrontFace* in the "[Interactive Touch Terminal](#)" tutorial.

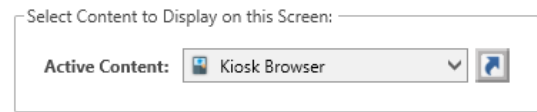
6 Preview

Now is the time to try out your Kiosk Browser in preview mode (i.e. to see how it will look later when it's up and running on the player). Just click on the preview button .

7 Setting up the Scheduling

After creating your Kiosk Browser, you will need to assign it to the player.

Go to the "Scheduling" menu and select the screen of your player PC. Then assign your Kiosk Browser as "Active Content:"



8 Advanced Configuration Options

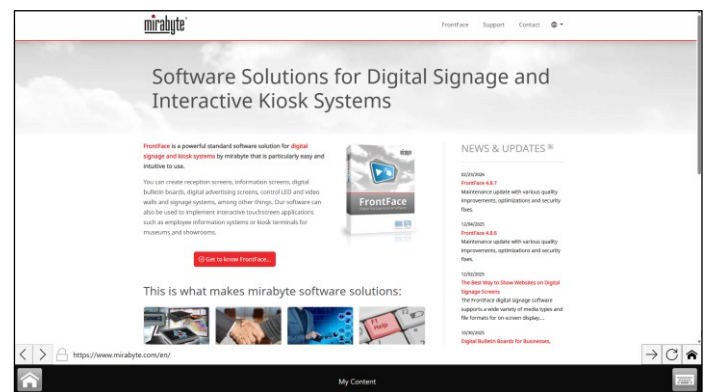
In the "Players" section of the *FrontFace Assistant*, you can click on "Show Advanced Player Settings..." for a list of more customization options and settings that you can adjust if necessary. This includes e.g. a PIN code to prevent unauthorized users from closing the kiosk application. Furthermore, you can add a whitelist filter to the integrated web browser, so that only certain websites can be displayed.

9 Publishing to the Player PC

To deploy your content to the player PC and to start it there, you must switch to the "Publishing" section in the *FrontFace Assistant* and then click on the "Publish!" button.

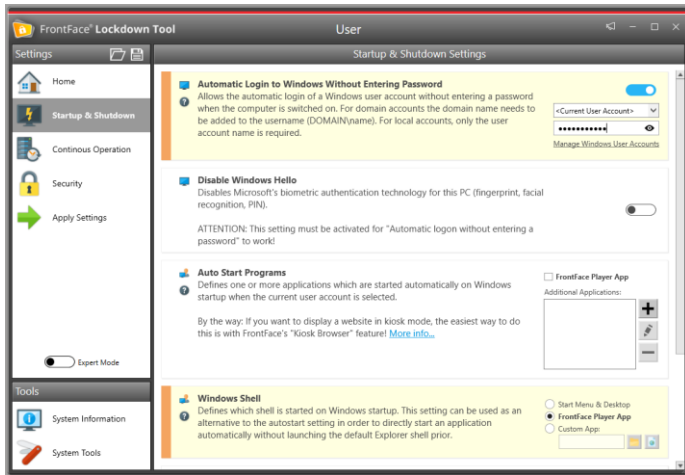


This way, all the content and the control information are transferred to your player PC, which will then take care of displaying your content as desired:



10 Using the FrontFace Lockdown Tool

To ensure that the *FrontFace Player App* launches automatically on the player PC and no login with a username and password is required, you can also configure the PC using the [FrontFace Lockdown Tool](#) for use as a kiosk terminal.



The *FrontFace Lockdown Tool* is a separate, free application that you can also access via the Windows Start menu; it greatly simplifies the process of setting up a PC as a secure kiosk terminal and restricts the PC's use to running *the FrontFace Player App*.

11 What's Next?

As you can see, it is really easy to create an interactive kiosk browser with *FrontFace*. *FrontFace* offers even more options, however; for example, you can add a screensaver playlist that will appear if the terminal hasn't been used for a certain amount of time.

For more information about the basic operation and installation of *FrontFace* and the capabilities that this software provides, please refer to the [FrontFace user manual](#) and the video tutorials available online at <https://www.mirabyte.com/go/frontface>

If you have any technical questions about *FrontFace* or this tutorial, please feel free to contact our support. Just visit our homepage to find out how to contact us:



<https://www.mirabyte.com/en/support/>