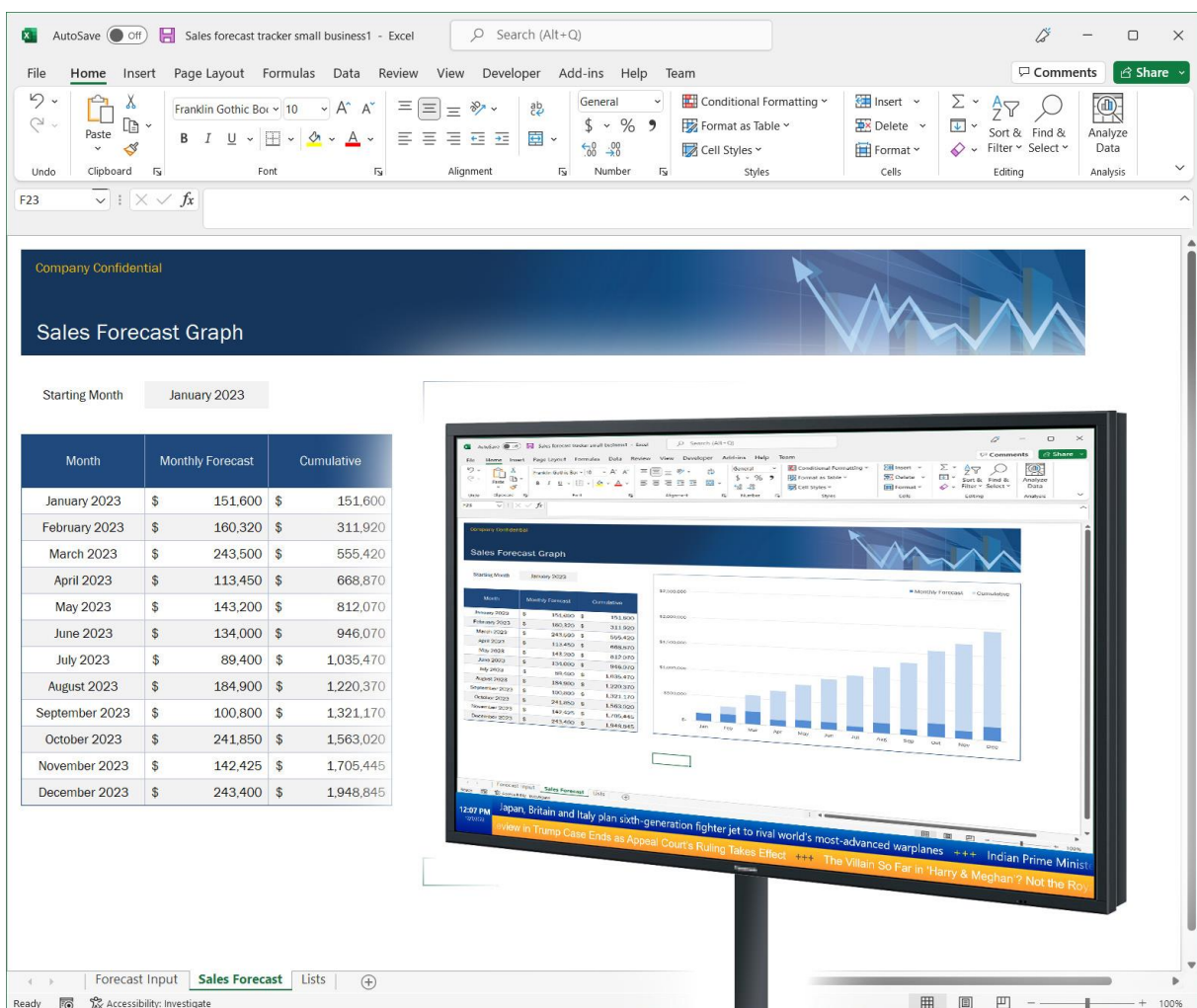


Excel Viewer

The digital signage & kiosk software **FrontFace** can be extended by plugins that add additional functionality. This way you can e.g., display special content types, integrate external data sources or systems and add entirely new features to the software.

Description:

With the Excel Viewer plugin for FrontFace, you can integrate Excel documents stored on a network drive/file server or a web server directly into your playlists or touch menus. The file is accessed "live" every time, so that any changes to the document are immediately reflected on the screen. You can either display all sheets of an Excel workbook or just selected ones.



Installation:

Please refer to the user manual of *FrontFace* on detailed information on how to install a plugin.

Notice: If you have previously downloaded and installed the trial version of the plugin, you have to install the full version over the existing trial version in order to get the full version running. The procedure is exactly the same as for installing a new plugin. If you already used the trial version of the plugin in your project, all settings will remain after installing the full version!

Setup and Usage:

Please note that Excel (or Microsoft Office) must be installed on the player PC. If you also want to use the preview, Excel must also be installed on the PC with the FrontFace Assistant.

Since the plugin displays Excel documents "live", you must specify the UNC network path or alternatively an HTTP URL to the document to be displayed. During publishing, the file will not be copied onto the player PC! It is important that the Excel document can also be accessed by the player PC under the given path or URL.

The Excel Viewer plugin internally uses Excel's print function to display the specified Excel workbook. Accordingly, you can use the print properties to specify how the document should appear on the screen. You can use the "Define print area" function in Excel to determine which parts of a worksheet are to be shown. You can also set aspects such as page orientation, scaling or margins using Excel's "Page setup". If you make any changes to the print settings of your Excel document, please make sure that you save the changes, because unless you make any other changes to the document, you will not be prompted to save the file when you close Excel!

In addition to specifying the path to the Excel document and the selection of workbook sheets to be displayed, you can also specify the number of repetitions and the display time for a sheet in the settings dialog of the Excel Viewer plugin. Also, as with all FrontFace media objects, you can specify the type of stretch to apply.

The Excel document is loaded as soon as the plugin is shown. If you use the plugin on a playlist page that is displayed permanently, you can optionally set an automatic refresh after a certain time interval, so that the document can also be updated in such a case.

Help and Support:

If you need help or technical support when using this plugin or the *FrontFace* software, you can contact our support. For more information, please visit: <http://www.mirabyte.com/en/support/>