



mirabyte **FrontFace**

for Netbooks & Tablets

Quick Start Guide

(Rev. 2010-11-11)

Copyright © 2010 by mirabyte GmbH & Co. KG
All rights reserved.

<http://www.mirabyte.com/>

TABLE OF CONTENTS

Introduction	3
What is FrontFace for Netbooks & Tablets?.....	3
Installation.....	4
Setup.....	4
System Requirements	4
How to use FrontFace	5
Basic Functionality.....	5
Windows Mode	6
FrontFace Settings.....	7
Shutting Down FrontFace.....	7
Home Screen	8
App Starter.....	9
Web Browser.....	10
Notification Center	10
E-Mail Checker	11
Feed Reader	11
Support	12

INTRODUCTION

WHAT IS FRONTFACE FOR NETBOOKS & TABLETS?

FrontFace is the next level user interface solution for Microsoft Windows-based Tablet PCs, Netbooks, Notebooks and Desktop computers from mirabyte. **FrontFace** provides an intuitive, easy to use user interface and helps to access and seamlessly integrate information from all over the Web.



INSTALLATION

SETUP

Please make sure that the computer on which you are installing **FrontFace** meets the system requirements that are specified in the following section ("**System Requirements**").

1. Download the **FrontFace** installation file from the mirabyte Website (<http://www.mirabyte.com>) and execute it.
2. Start **FrontFace** by clicking on the shortcut that has been created by the installer (either on the Desktop or in the Windows Start Menu).

Autostart: The installer offers you to add a shortcut for **FrontFace** to the "autostart" folder of the Windows Start Menu. This will automatically start **FrontFace** when you start your computer. If you have not chosen to start **FrontFace** automatically, you can add a shortcut to the "autostart" folder manually. In the same way you can also manually remove the shortcut if you wish to turn off the autostart feature.

In case you should experience any problems or difficulties, please make sure that you have fully read this manual. If you cannot solve your problems, you can contact the free mirabyte support service (please see section "**Support**").

SYSTEM REQUIREMENTS

In order to install **FrontFace** on a computer, the following system requirements have to be met:

Operating system:

- Windows XP SP3, Windows Vista or Windows 7 (both 32-bit and 64-bit versions are supported)
- .NET Framework 4.0 (the full installation profile is required, not the Client Profile!) *
- Silverlight and/or Flash browser plug-in in case you want to display either Silverlight or Flash content on Web pages

Hardware:

- A graphics adapter with DirectX support and the latest DirectX drivers installed
- Touch Screen (optional)
- Mouse or Touch Pad (optional)

Other requirements:

- Internet connection (if a proxy server is used, make sure that the operating system is configured to use the proxy server by default!)

*) The installer of **FrontFace** automatically checks if the .NET Framework 4.0 is installed. If the appropriate framework version is not found, the automatic installation of the .NET Framework 4.0 is offered directly to you by the **FrontFace** installer.

HOW TO USE FRONTFACE

BASIC FUNCTIONALITY

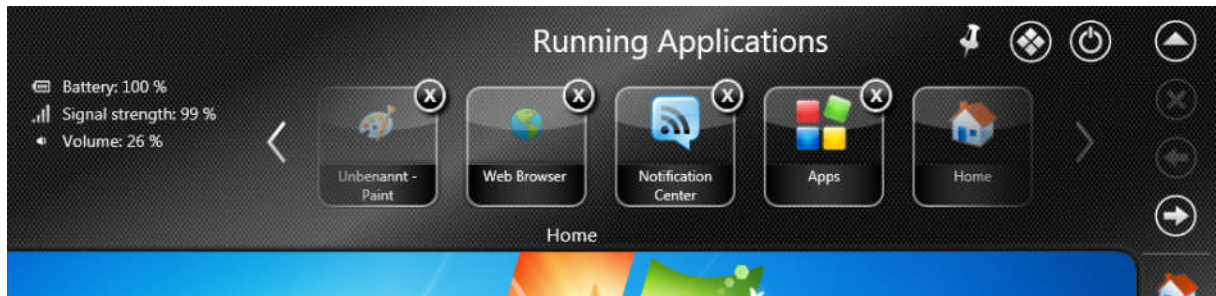
Right after starting **FrontFace**, the *Home Screen* appears. The screen consists of two major areas:

- The “Arch”:**
 The “Arch” is a frame that surrounds the screen on the top and the right side. In the top part, the current application title is shown (e.g. “Home”) and on the left side the system tray icons are shown which inform you about the current system status (e.g. WiFi connection, battery level, sound volume etc.). The bar on the right side contains the system buttons for opening the list of running applications, for closing applications and for switching between running applications. Additionally the right bar also contains shortcuts to the most important applications such as *Home Screen*, *Web Browser*, *Windows Explorer* (only on Windows 7/Vista systems), *Notification Center* and *App Starter*.
 Below the shortcuts, the right bar contains a button to open the **FrontFace** settings menu and a clock which shows the current date/time.
- The application area:**
 This is the main part of the screen which is surrounded by the “Arch”. Inside this area the current application’s user interface is shown. When **FrontFace** is started, the “Home” application is launched automatically.



By clicking on the “▼” button, you can slide out the top bar of the arch to show a list of currently running applications. To switch to another application you have to click on the button of that application in the list of running applications. By clicking on the “x” button which is located in the upper right corner of every application button, you can terminate the application directly.

Additionally the top bar of the “Arch” shows a bigger version of the system tray when being expanded. By clicking on one of the icons in the system tray you can access the corresponding functionality (e.g. WiFi settings or volume control).



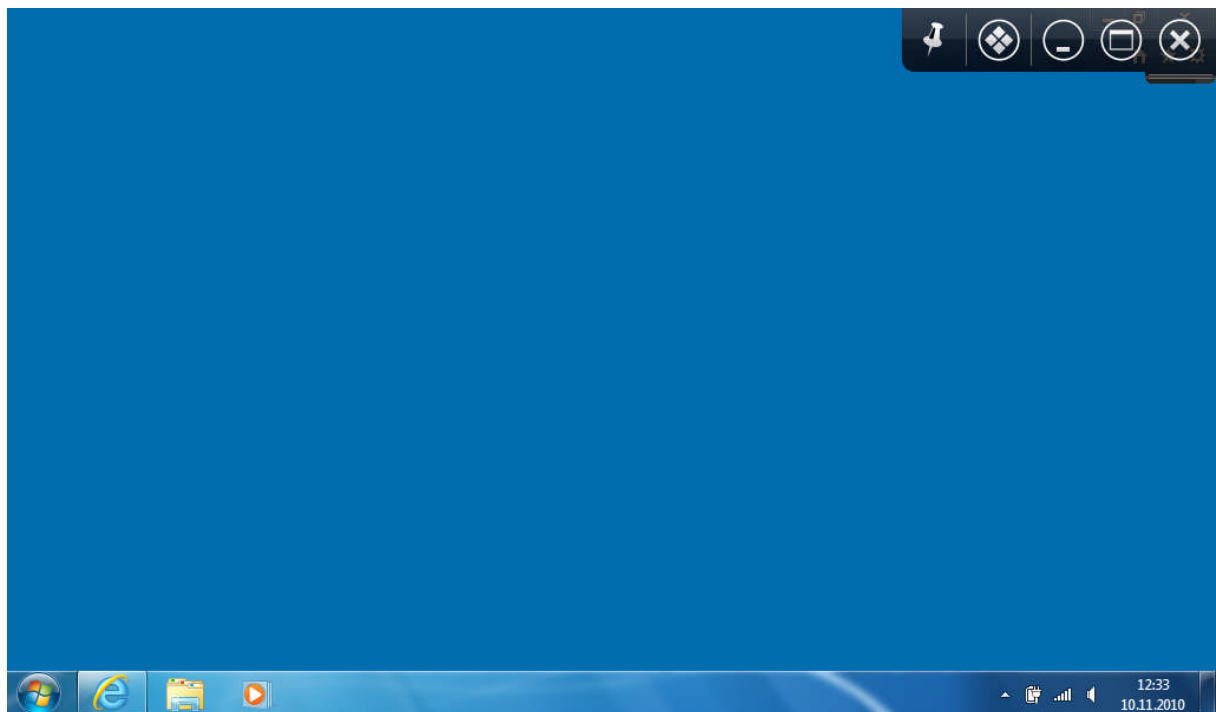
When you select an application from the list of running applications, the top bar of the “Arch” will be minimized automatically. In order to keep the top bar always expanded, please click on the “pin” button.

WINDOWS MODE

Even though you can run any normal Windows application “inside” of **FrontFace**, there might be certain situations where you would like to use the normal Windows user interface (task bar, etc.). **FrontFace** comes with a so called *Windows Mode* that restores the original Windows user interface while running **FrontFace** in the background. Click on the “❖” button in the “Arch” to activate the *Windows Mode*.



TIP: Touch Interaction Panel



When **FrontFace** is running in *Windows Mode*, you can use the normal Windows user interface and all Windows applications in the usual way. In the upper right corner you find a special panel (*TIP – Touch Interaction Panel*). This panel remote controls the “maximize”, “minimize” and “close” buttons of the currently

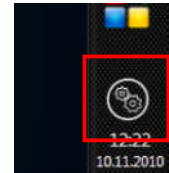
selected window. This feature makes it easier to hit these buttons correctly on small screens (Netbooks) or on touch screen devices (finger-based input).

By clicking the “❖” button the TIP you can return to **FrontFace** again.

FRONTFACE SETTINGS

You can individually customize **FrontFace** to a certain extend. This includes the style of the “Arch”, whether to use a custom Web browser application and other global settings.

To access the settings menu, click on the settings button in the lower right corner of the screen.



In the “General” section you can configure global settings for FrontFace (Web browser, animation effects, style of the “Arch”, etc.).

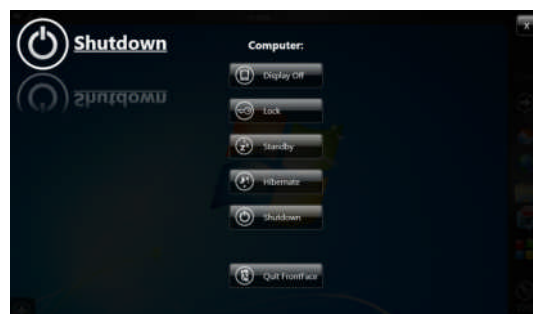
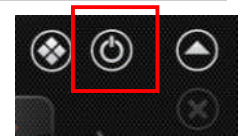


In the “Windows System Settings” section you can access the *Windows Control Panel* and you can apply more touch screen friendly system metrics (e.g bigger buttons and scrollbars).

In the “About / Updates” section you can check if a new version of **FrontFace** is available. We highly recommend to regularly check for new updates. This will guarantee that you always use the latest version of **FrontFace**.

SHUTTING DOWN FRONTFACE

To either shutdown the computer or to activate stand-by or hibernation mode or to exit **FrontFace**, please click on the shutdown button in the “Arch”.



HOME SCREEN

The *Home Screen* is used for displaying widgets. Widgets are small “applications” that can be placed on the *Home Screen*. In order to move, add or remove widgets on the *Home Screen*, please click on the “+” button in the lower left corner.

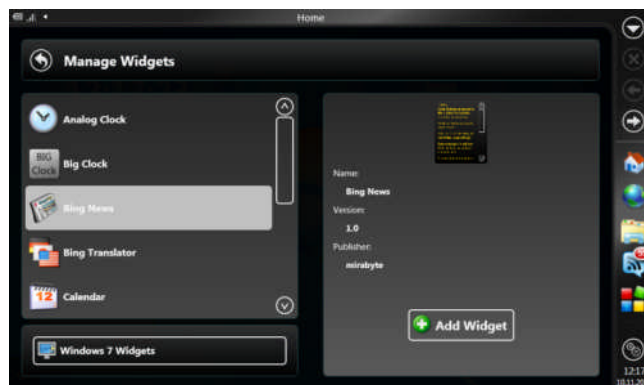


Once clicked, the *Home Screen* turns into edit mode. You can now move widgets by using “drag & drop” either with the finger on touch screen devices or by using the mouse/touch pad.

A widget can be removed by clicking on the red “-” button that appears in the upper right corner of every widget.



To add a new widget, simply click on the one the “+” buttons. This will open the widget catalog. After selecting a widget from the widget catalog, click on the “Add Widget” button to add the selected widget to the *Home Screen*.



Finally, click on the “✓” button in the lower left corner to exit the edit mode.

APP STARTER

The *App Starter* is the main application for launching applications. Select a category and click on the appropriate application button to start an application.

In the lower left corner a box is shown which holds shortcuts to the nine last recently used applications.

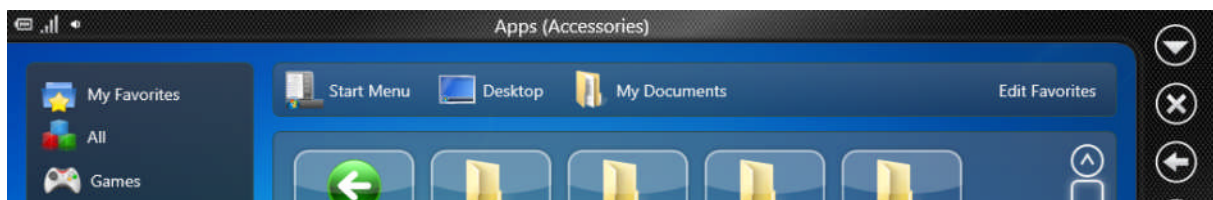


The category “My Favorites” can be customized by selecting applications from other categories. To customize the applications which are shown in the “My Favorites” category, simply click on the “Edit Favorites” button in the upper right corner of the *App Starter*.

A “+” sign appears over all application buttons. By clicking on an application button, the application is added to the “My Favorites” category. If an application has already been added, a “-” sign is shown instead. By clicking on a button with a “-” sign on it, the corresponding application is removed from the “My Favorites” category.

To exit the customization mode, please click once again on the “Edit Favorites” button.

Another core feature of the *App Starter* is to provide access to the shortcuts in the *Windows Start Menu*, the *Desktop* and to access the files in the “My Documents” folder.



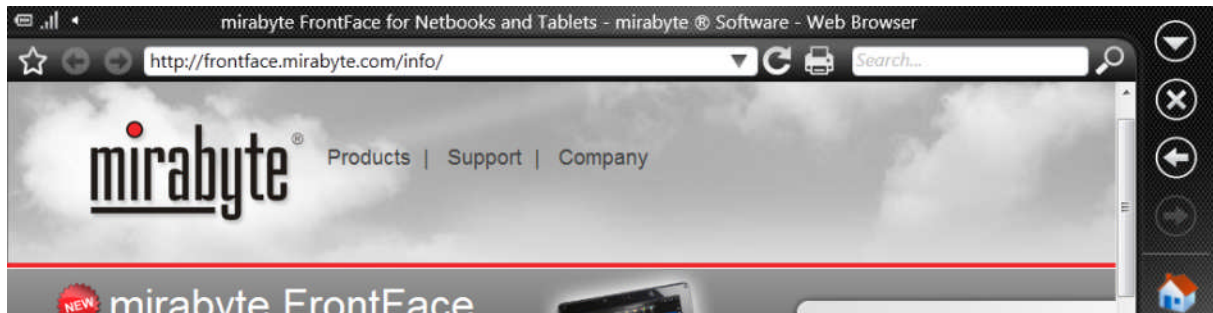
Click on the “Windows” category to access the shortcuts for Windows applications. You can choose between the *Windows Start Menu*, the *Desktop* and the “My Documents” folder.

To return to the normal view of the *App Starter*, simply select another category, e.g. “My Favorites”.

WEB BROWSER

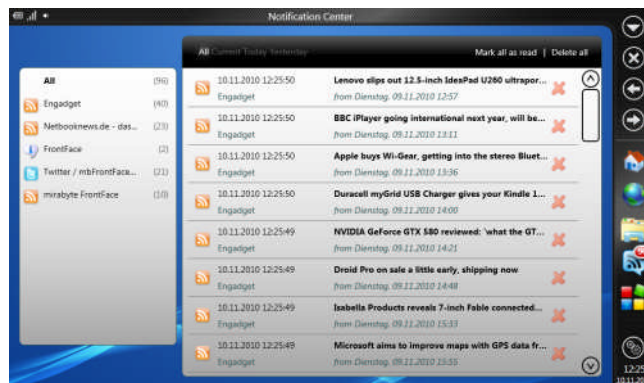
FrontFace has a built-in Web browser application that has been optimized for small screens. It is interconnected with the Internet Explorer bookmark database. You can access and modify the Internet Explorer bookmarks both from within the Internet Explorer itself and **FrontFace**.

If you prefer to use a different Web browser than the integrated one (e.g. Firefox or Google Chrome), simply assign a different Web browser in the settings menu of **FrontFace** and this application will be used instead of the **FrontFace** Web browser for surfing the Web.



NOTIFICATION CENTER

Another core application of **FrontFace** is the *Notification Center*. It is a central hub that aggregates information and status updates from all over the Web. You can apply different filters to select certain notifications.



Every unread (= new) notification is counted and displayed in a small bubble on top of the *Notification Center* application button.

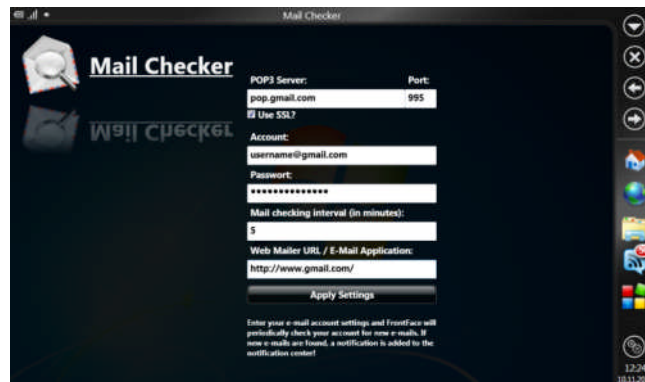
The *Notification Center* only displays the notifications. Sources for the notification center can either be RSS/Twitter feeds (or feeds from other social networks) or e-mails that are sent to your e-mail account.

In order to configure which notifications you would like to see in the *Notification Center*, please configure the *E-Mail Checker* application and the *Feed Reader* application.

E-MAIL CHECKER

The *E-Mail Checker* application periodically checks your e-mail inbox for new e-mails and generates a notification in the *Notification Center* in case new e-mails have arrived.

To use the *E-Mail Checker*, you have to enter your e-mail account credentials.

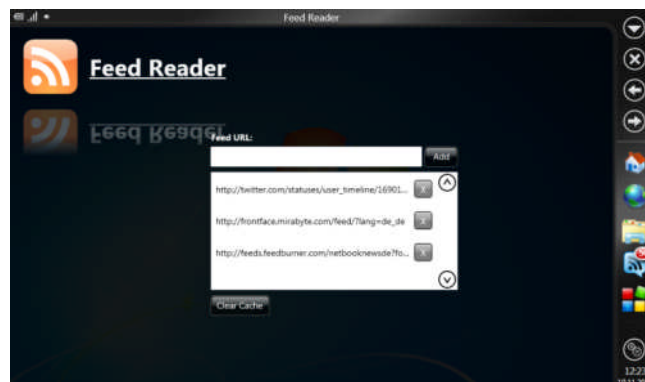


Make sure that you enter everything correctly. The port of the POP3 server is usually 110 if you do not use SSL or 995 in case you use SSL.

You can also define the length of the interval in minutes that is used for checking the e-mails in the background.

FEED READER

The *Feed Reader* application periodically checks RSS and Twitter feeds for new entries. If new entries have been found, a notification is generated in the *Notification Center*.



To subscribe to a new feed, you have to enter the URL of the RSS feed and click on the “Add” button.

Click on the “x” button next to an already added feed to remove this feed again.

If you click on the “Clear Cache” button, the feed cache will be cleared and all feed entries will be recognized as “new”.

SUPPORT

If you should experience any technical problems with the software, or if you have any questions regarding **FrontFace**, please feel free to contact the technical support. Of course any helpful suggestions or feature requests are always welcome as well!

E-Mail (technical support): support@mirabyte.com

E-Mail (general, pre sales): info@mirabyte.com

Web (support forum): <http://forum.mirabyte.com/>

Apart from the basic technical support which is free for all customers, mirabyte also offers dedicated services level agreements (SLA) and individual support plans. Please contact mirabyte for details in case you are interested.

FrontFace for Netbooks & Tablets is also available for OEM and White Label License with individual customization options for device manufacturers and hardware vendors. Please contact us in case you are interested in pre-installing or shipping FrontFace with your products.

For more information about mirabyte **FrontFace**, please visit <http://www.mirabyte.com/>. The latest information about the mirabyte **FrontFace** product line is published on the **FrontFace** blog: <http://frontface.mirabyte.com/blog/>